

FACTS



Location Central location near the SBB railway station, 8 minutes' walk into city centre, 10 minutes by tram to the Messe Basel exhibition and trade fair centre, 20 minutes with the airport bus to EuroAirport Basel-Mulhouse-Freiburg.

Service 24h reception desk, laundry service, ironing facilities in "la Résidence" building, 230 V plug sockets, small fitness room, business corner with free Internet access, daily newspaper at reception desk, free use of public transport in the Basel area, underground car park with 36 spaces, check-in from 2 p.m., check-out by noon.

Conference and banqueting centre Our three air-conditioned conference rooms are fitted out with state-of-the-art equipment and offer space for up to 200 people. Our professional and motivated team will assist you with planning and organization.

Universum conference and banqueting room Our Universum on the sixth floor, entirely surrounded by glass, affords fabulous views of the city of Basel and towards neighbouring countries. A fantastic setting for special events and special guests.

Le Train Bleu Restaurant Enjoy a fine choice of Swiss traditional, regional and international dishes. In summer, a terrace beckons you to relax and enjoy. Open daily from 11:30 a.m. to midnight.

Breakfast Enjoy a full breakfast buffet in our restaurant, Le Train Bleu.
Mondays-Fridays: 6:30 a.m.–10:00 a.m. / Saturdays, Sundays and bank holidays: 6:30 a.m.–11:00 a.m.

Le Train Bleu bar Our bar is an ideal meeting place for a drink with a business partner, a chat with friends, or for relaxing after a busy day at work. Open daily from 6:00 a.m.–midnight

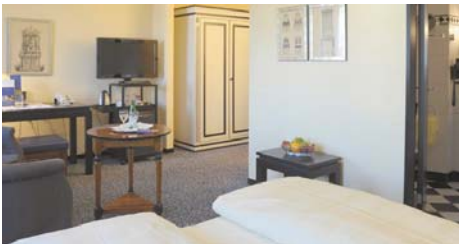
Room service From 6:30 a.m.–11 p.m.

Guest rooms Our 107 rooms and suites (all non-smoking) have the following features: desk, room safe, minibar, hairdryer, coffee/tea-making facilities, LCD-TV, Video on Demand, Internet on TV, radio, telephone with ISDN modem connection, high speed Internet, WLAN, security locking system, door spy hole.



Standard (16–20 m²)

- Room with double bed (140 × 200 cm)
- Bathroom with shower or bathtub
- Seating



Comfort (23–27 m²)

- Room with double bed or two single beds (160 × 200 cm or 2 × 90 × 200 cm)
- Bathroom with bathtub
- Seating



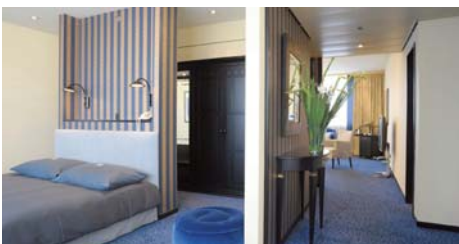
Superior (31–34 m²)

- Room with double bed or two single beds (160 × 200 cm or 2 × 90 × 200 cm)
- Bathroom with bathtub
- Seating



Junior suite (38–45 m²)

- Room with double bed (160 × 200 cm or 180 × 200 cm)
- Separate living space with seating and sleeping area
- Generous bathroom with bathtub



Executive suite (75 m²)

- Room with double bed (2 × 90 × 200 cm)
- Separate living space with sofa and sleeping area
- Generous bathroom with whirlpool and separate shower
- Separate toilet